

2016 JAN 15 PM 2:24
ASIOCO, INC.
10801 National Blvd. #102
Los Angeles, CA 90064
CALIFORNIA REGIONAL
QUALITY CONTROL BOARD
LOS ANGELES REGION
Tel 310 475 6040
Fax 310 4703301

January 12, 2016

Los Angeles Regional Water Quality Control Board
Attention: Mr. Joshua Cwikla
320 W. Fourth Street, Suite 200
Los Angeles, CA 90013

e-mail: steveriva@gmail.com

Re: Directive Pursuant to Section 13267 – Order to submit information -- R4-2015-0390

Dear Mr. Cwikla:

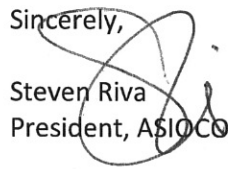
This is to inform that we have no knowledge of any existing and/or historic open “sumps” located within our current ASIOCO, Inc. operations in the Rosecrans Field, Los Angeles County. Note that our oil and gas leases are located in the unincorporated Gardena area. The properties are adjacent to developed land. I have no technical reports available for this inquiry as there are no “sumps” within our leases. I have no reason to believe that a sump exists on our leases at this time. I have inquired of our long-standing contract lease operator if he has any knowledge of any sumps and he does not.

ASIOCO, Inc. produces crude oil, gas and water from two oil leases in the Rosecrans Field called the Duchess Lease and the Pacific Clark Lease. A copy is enclosed of the plot plan and flow process diagram for each lease. Crude oil is sold via tanker truck to Plains Marketing. Pacific Clark gas is used onsite as fuel to operate the well’s gas engine, and Duchess gas is sold to the utility company. Produced water at both leases is passed through a series of clarifiers prior to being sent to the Los Angeles’s Sanitation District via sewer. Our tanks and processing equipment are all enclosed within secondary containment and are connected to a vapor recovery system. I certify that no discharges of produced fluids have occurred.

I, Steven Riva certify under penalty of law that I have personally examined and am familiar with the information submitted in this document and all attachments and that, based on my inquiry of those individuals immediately responsible for obtaining the information, I believe that the information is true, accurate, and complete. I am aware that there are significant penalties for submitting false information, including the possibility of fine and imprisonment.

Please let me know if you need additional information regarding the above-provided statements.

Sincerely,

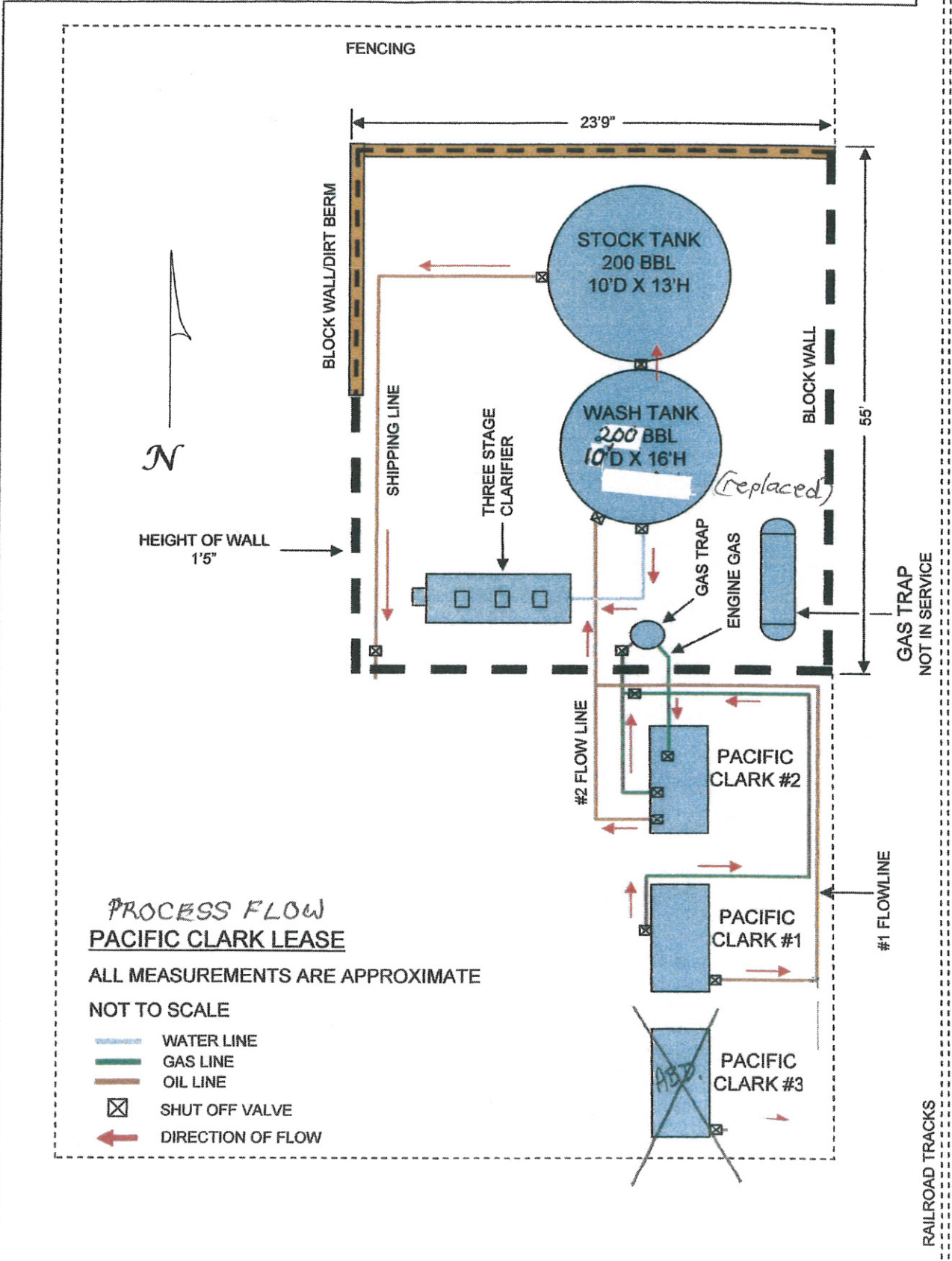

Steven Riva
President, ASIOCO, Inc.

Attachments:

- Duchess Lease facility Plot Plan and Process Flow Diagram
- Pacific Clark Lease facility Plot Plan and Process Flow Diagram

130th STREET

FIGUEROA BOULEVARD



PROCESS FLOW
PACIFIC CLARK LEASE

ALL MEASUREMENTS ARE APPROXIMATE

NOT TO SCALE

- WATER LINE
- GAS LINE
- OIL LINE
- ☒ SHUT OFF VALVE
- ← DIRECTION OF FLOW

RAILROAD TRACKS

**ASIOCO, INC.
 SPILL CONTINGENCY PLAN
 FACILITY PLOT PLAN - DUCHESS LEASE
 (not to scale)**

